



# Penmap *encore*

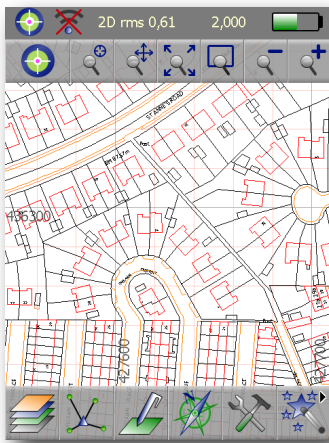
## What makes Penmap *encore* your first choice?

For over twenty years, Penmap has provided mapping and data collection solutions for surveyors and engineers, GIS professionals, scientists, environmentalists and others. Penmap combines powerful visualization and data management with high-accuracy positioning to deliver richly complete maps and datasets to your GIS, surveying or CAD system. Now, with the introduction of new Penmap *encore*, you'll work faster, easier and get better results.

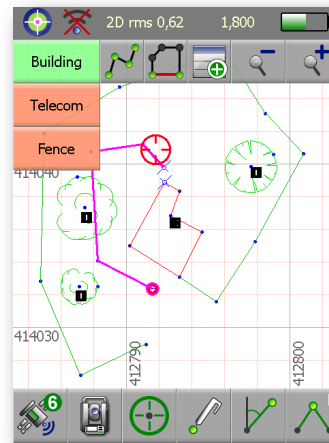
Here are 20 ways that Penmap *encore* works for you.

### 1 Confidence

Penmap *encore* always provides you with a map view of your job. Everything that you are collecting is displayed on the map in realtime, including your current position. This highly improves the quality and completeness of your data and gives you peace of mind that you have collected everything completely and correctly before leaving the site.



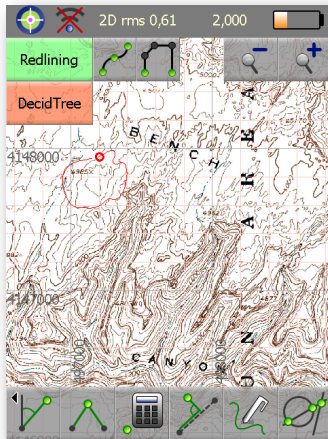
The "Home" screen.



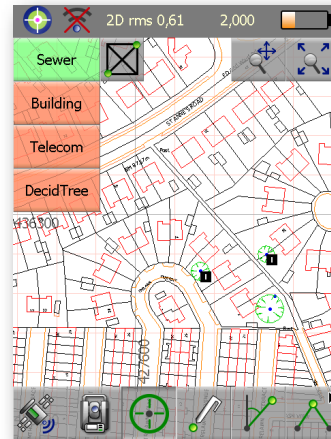
Data collection app.

## 2 More Space for Your Maps

We don't accept compromises between large buttons for easy operation and a gorgeous map display! The upper and lower button bars are translucent to show you the largest map real-estate possible. You get an almost "Tablet PC feeling" on a lightweight, convenient and affordable PDA device.



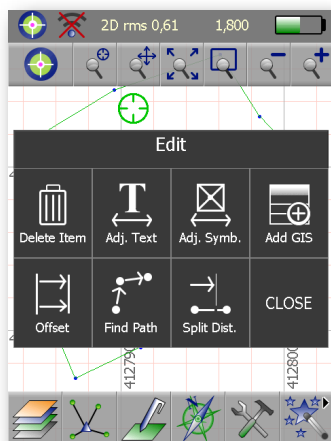
Load USGS maps as background reference.



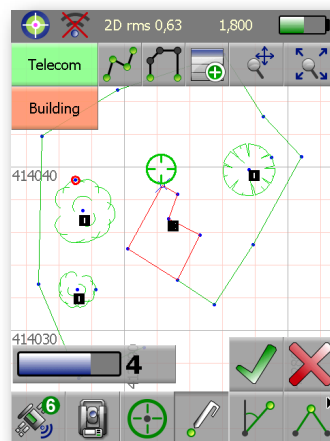
Translucent button bars and feature controls.

## 3 Revolutionary user interface — Touch Your Data

The Penmap *encore* experience is a new and more enjoyable way of operating surveying and mapping software. Penmap *encore* is designed to be operated with your fingers. You don't need a stylus that you could easily lose or forget. It's fast and easy to control and navigate your data and map with just a touch of your finger. Now you can even Touch Your Data.



Edit Function picker.



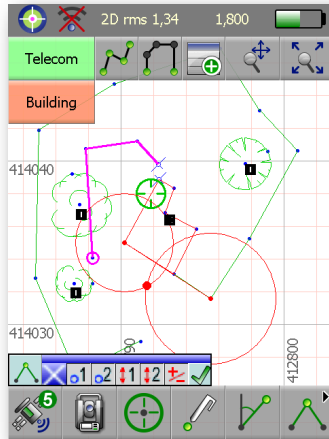
On-screen, translucent controls.



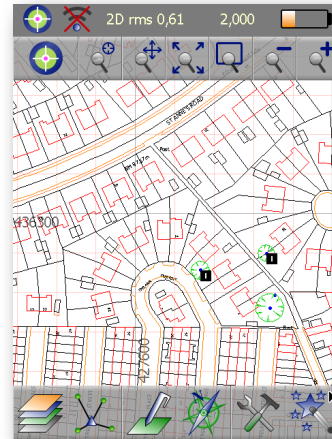
On-screen Numeric Keypad.

## 4 Easy to use. Really.

Penmap *encore* is designed to be used immediately. You don't need to be a surveying expert or go through a long learning curve. Because you always see what you are doing in realtime, using Penmap *encore* is like drawing a sketch or map on paper. And no worries about mistakes—Penmap *encore*'s UNDO function can remove errors instantly.



What you see is  
what you get.  
(WYSIWYG)  
Realtime mapping  
with Penmap.



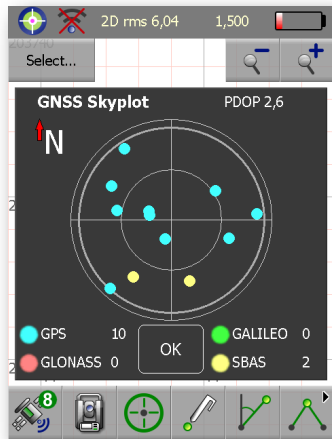
Overlay of new  
collected data on a  
vector background  
map.

## 5 Data Security

Your data and points are precious! Penmap *encore*'s *Autosave* function automatically backs up your data while you are working. It keeps your information safe and secure.

## 6 Quality control made easy

Penmap *encore* makes quality control easy and intuitive. All important status information, including number of satellites, accuracy level and battery status are visible at all times. Additional information is always accessible, and you are not overloaded with unnecessary detail. Penmap *encore*'s unique, color-coded GPS cursor makes it simple to produce data within your required accuracy level. Penmap also stores complete surveying meta data for reporting and quality control.



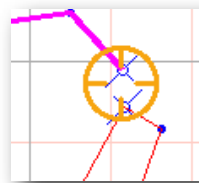
GNSS Skyplot gives you all necessary satellite information in one view.



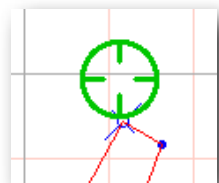
Penmap's top status bar provides information about accuracy (RMS), battery status, antenna height and correction service.



Number of satellites always in view



The color coded GPS cursor provides easy quality control. Settings are user definable.

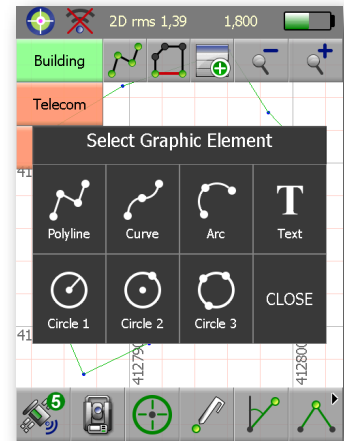


## 7 Dramatically reduce office processing

With Penmap *encore* you can complete most of your project right in the field. You return with a complete CAD drawing or high quality GIS data. Your office tasks get reduced to just a final touch or printing, enabling you to deliver—and invoice—your projects faster than ever..

## 8 Finish your field work faster

Penmap *encore* makes data collection and stakeout 10-15% faster than traditional surveying methods: With 2 or 3 clicks you can select any feature. It's even faster than entering codes using a controller keyboard.

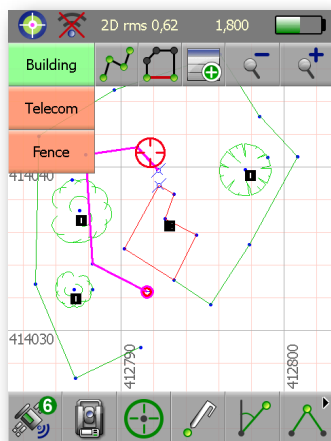


Direct and fast access to your feature library, with favorites and pages.

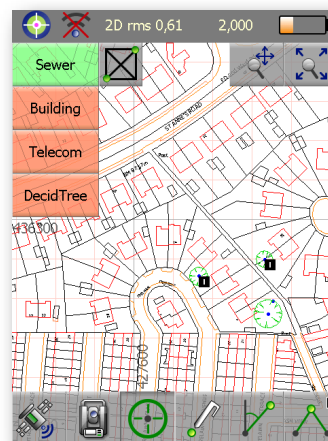
Change of the default graphic element.

## 9 Collect multiple features in parallel with iFeature™

Do you need to collect multiple features simultaneously, such as a curb together with sewers and lamp posts? Or even multiple line features: a curb, a pathway and a fence without the need to finish one feature first? Penmap *encore's* unique iFeature™ system manages multiple features. It reduces your walking distance and saves time.



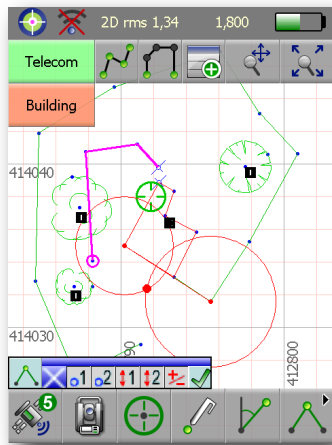
Penmap iFeature™:  
Toggle between 3 line  
or area features and  
collect them  
simultaneously.



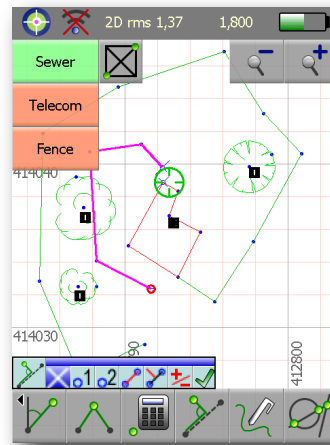
Penmap iFeature™:  
Toggle between 3  
line / area features  
and 1 point feature.  
The active feature is  
shown in GREEN and  
highlighted on the  
map. To toggle just  
click on another  
feature.

## 10 Powerful CAD tools at your fingertip

Penmap provides simple CAD or COGO tools to speed your field work. Collecting features not accessible with GPS can require a new, time-consuming instrument setup. Penmap *encore's* unique *Visual Bilateralation*, *Visual Chain&Offset*, and *Visual Intersection* methods complement Penmap *encore's* powerful set of surveying and mapping tools to collect inaccessible features quickly and accurately.



*Visual Bilateralation*  
(Distance - Distance offset) will collect a new feature by using 2 distance measurements with a laser rangefinder or measuring tape.



*Visual Chain&Offset.*

## 11 Collect & Share with ESRI™, AutoCAD™ and others

It's easy to integrate Penmap *encore* into your existing work and data flow. Import your complete ESRI project into Penmap *encore* using SHP, APM, APL files, and you are ready to add and edit your data in the field and export it back to your ArcGIS. Are you in a CAD world? Exchange your drawings seamlessly with AutoCAD or other systems using the DXF standard. Through our partners, Penmap *encore* supports GE Smallworld™ and other systems via Penmap's open Universal Format standard.

## 12 Total Station Support: When GPS alone can't do the job.

You can use your Total Station for data collection and stakeout. Penmap *encore* supports all types of station setup, including various types of resection. It even allows you to control your robotic instrument from the prism or work in reflectorless mode.



Total Station controls and measurement.

## 13 A Secure Investment: Open interfaces and Microsoft .NET Architecture for PDA and Tablet PC

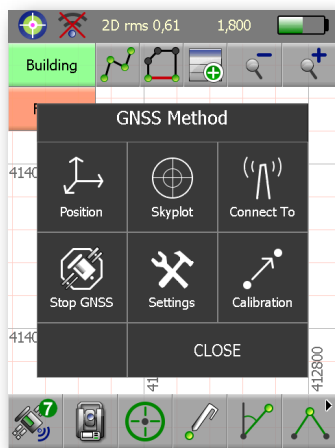
Penmap *encore* supports all major GPS, Total Station, and Laser rangefinder instruments. You can either use your existing instrument hardware or decide for a manufacturer who meets your application requirements and budget.

You can run Penmap *encore* on PDA or Tablet PC devices.



## 14 Instrument settings made easy

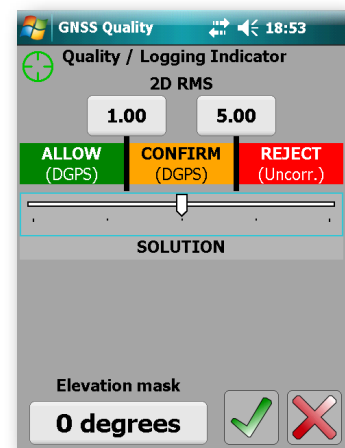
Setting up your instruments should not be complicated! Penmap *encore* is designed with non-surveying professionals in mind. Penmap *encore* is shipped with field-proven default settings and can detect your receiver automatically.



Access to GPS Settings



All settings in one view.



Visual Quality settings.

## 15 Experience the highest flexibility in data collection

Data collection should meet your workflow, not a software structure! How often do you experience that you can't collect a complete line feature, like a curb or utility with GPS or Total Station alone? Sometimes you need to combine GPS or Total Station measurements with COGO to get all of the points you need. With Penmap *encore*, you can switch easily between more than 10 methods during data collection of a single feature.



Methods toolbar of the data collection application in Penmap *encore*.

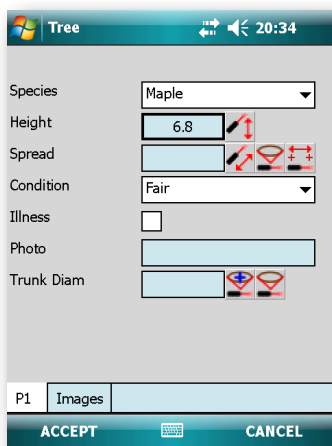


## 16 Penmap GIS: More than attributes

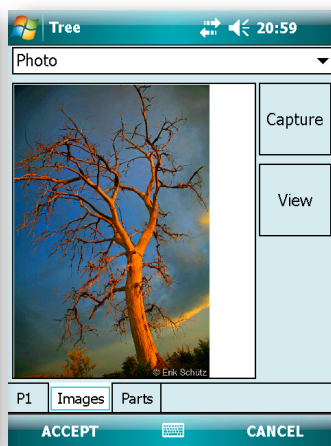
Penmap *encore* goes beyond the standard field types such as text, lists, checkboxes and pictures. You get powerful new capabilities including:

- Sketching
- Calculations between entry fields (sum, multiply, subtract, divide, average, cubic feet)
- Calculations from the map (area, perimeter, volume)
- Laser measurements and calculations (tree height, spread, trunk diameter, missing distance)

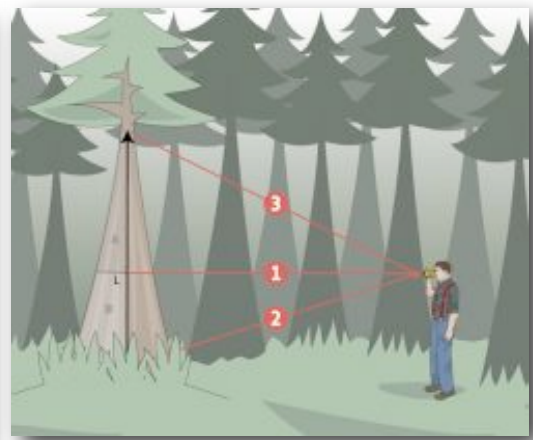
Penmap *encore* lets you add and edit line/area feature attributes at any time while collecting the feature, not just at the begin or end.



GIS form with measurement controls for height, diameter.



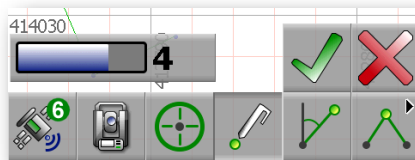
Pictures as attributes.



One of the many measurement algorithms fully integrated in Penmap *encore*. Image © MDL.

## 17 Precise GPS measurements

For more accuracy, you can use Penmap *encore*'s Averaging mode for all feature types, including line and area feature.. You decide how many epochs Penmap should use to compute the position, increasing reliability and accuracy of your data.

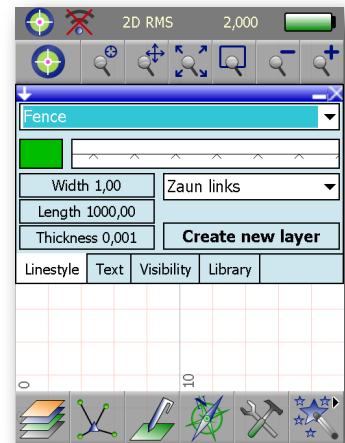
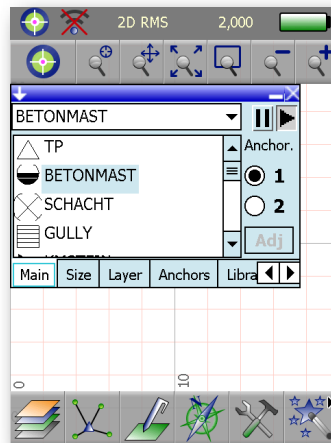


Penmap's **Averaging** mode computes positions with high accuracy for all type of features.



## 18 Customizable

Customize Penmap *encore* to your needs or create multiple configurations depending on the specific requirements of your projects. You can fully customize the Methods toolbar for data collection, and define multiple libraries for features, symbols and layers. You can also contact our support team for bespoke customization.



## 19 Support and help when you need it

Penmap *encore*'s online video tutorials guide you through the software functionality and help you through your first steps. Additionally you can contact the Penmap support team via Email or Phone, or use Penmap's Customer Service portal. And you can join the *My Penmap* online community where you can interact with other Penmap users around the world and profit from their experience.



## 20 Risk Free: Your success is guaranteed.

Interested in trying Penmap *encore* now? With Penmap's trial program, you can use the full functionality of Penmap *encore* free for 30-days, including full support.

Put Penmap *encore* to work today. Visit [www.penmap.com](http://www.penmap.com) and download your trial version.

Welcome to the Penmap Community.

Erik Schütz  
Managing Director  
Penmap.com Ltd.